



QUARTER ROW

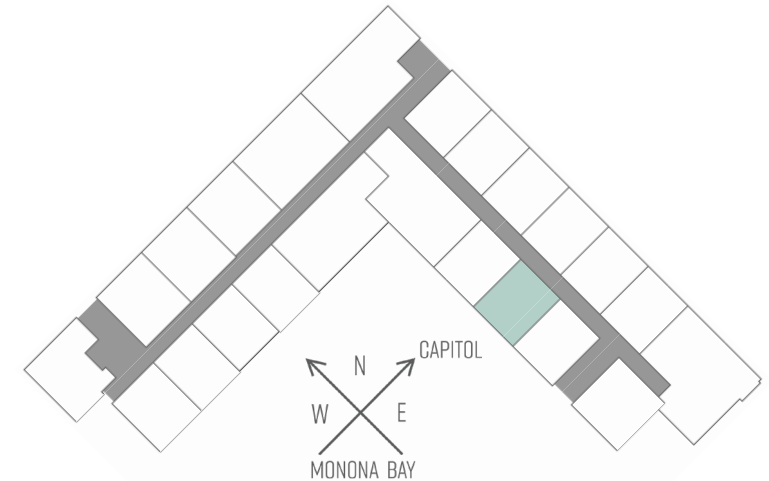
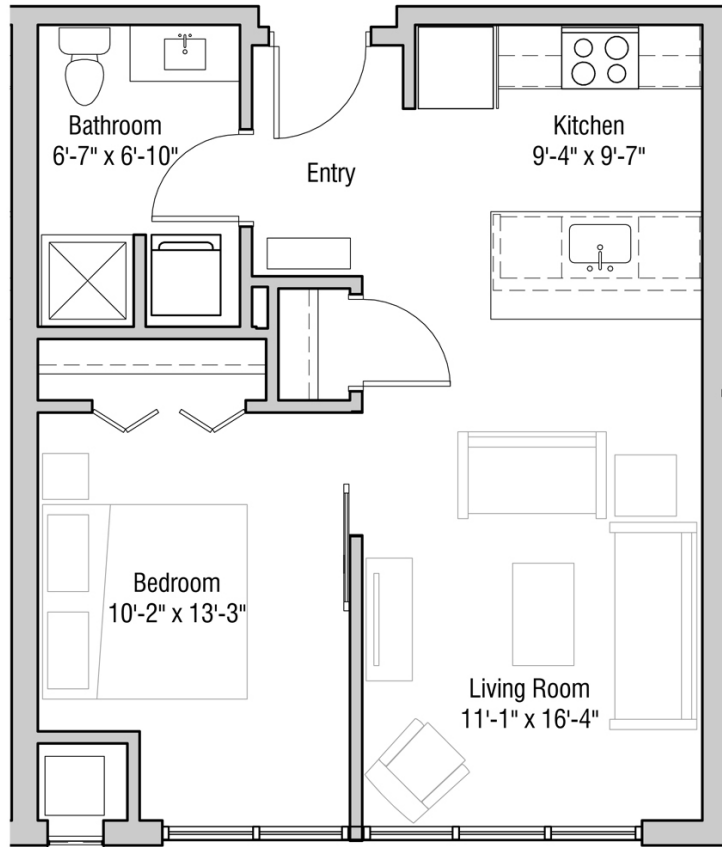
601 WEST DOTY STREET - MADISON, WI

ONE BEDROOM
ONE BATHROOM
560 SQUARE FEET

PRICING:

AVAILABILITY:

FEATURES:



PROFESSIONALLY MANAGED BY URBAN LAND INTERESTS

(608)661-7600 WWW.ULI.COM

