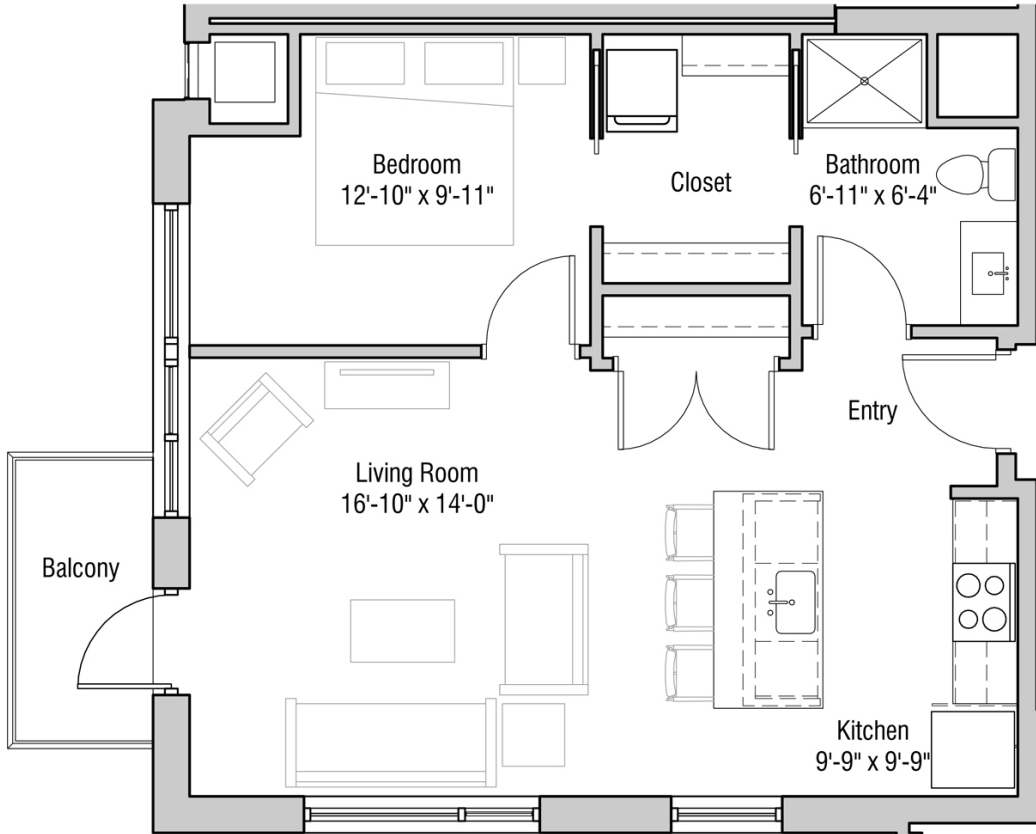


# QUARTER ROW

601 WEST DOTY STREET - MADISON, WI

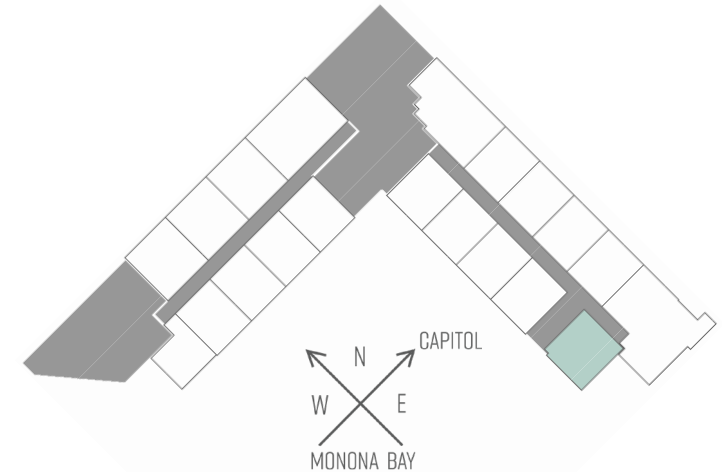
ONE BEDROOM  
ONE BATHROOM  
625 SQUARE FEET



PRICING:

AVAILABILITY:

FEATURES:



PROFESSIONALLY MANAGED BY URBAN LAND INTERESTS

(608)661-7600 WWW.ULI.COM

