

# CITY PLACE



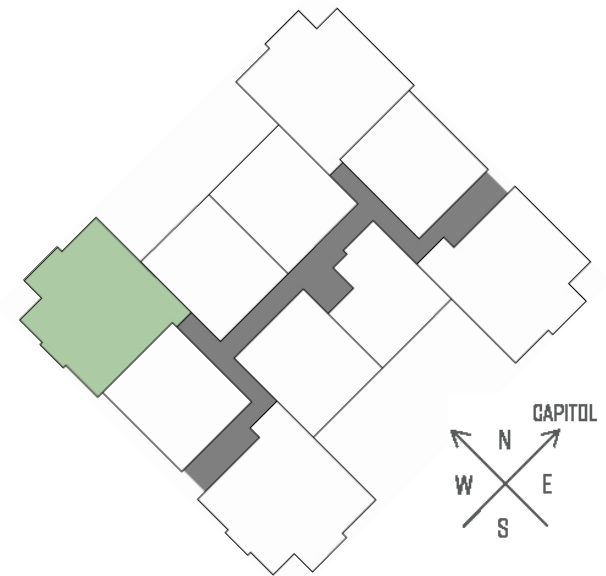
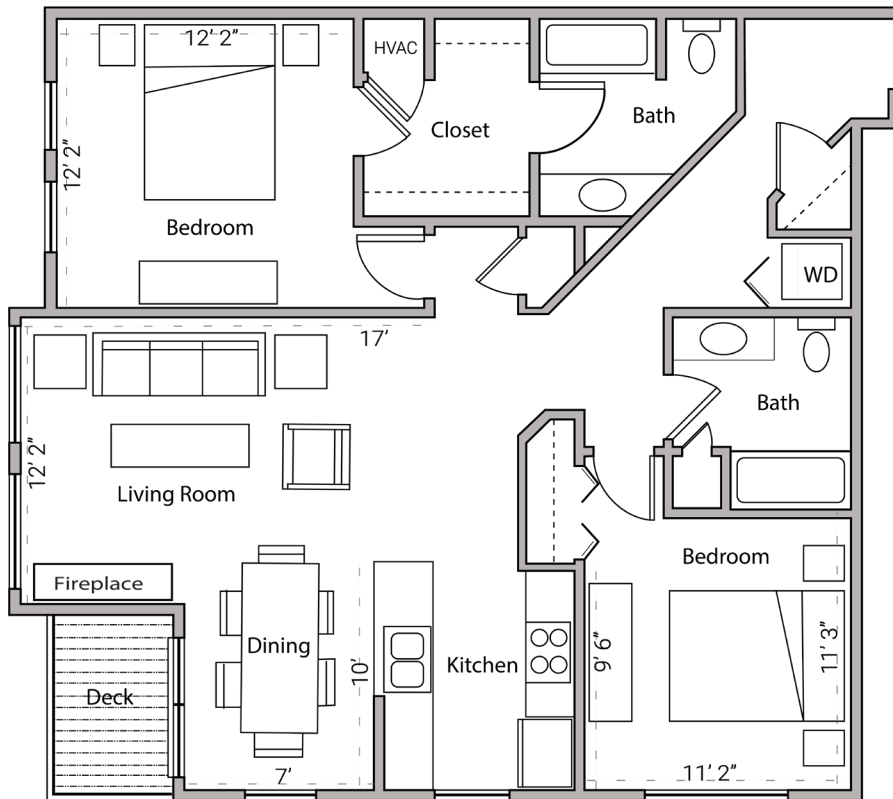
TWOBEDROOM  
TWOBATHROOM  
1,121 SQUARE FEET

430 WEST MAIN STREET - MADISON, WI

PRICING:

AVAILABILITY:

FEATURES:



PROFESSIONALLY MANAGED BY URBAN LAND INTEREST (608) 661-7600 WWW.ULI.COM