

CITY PLACE



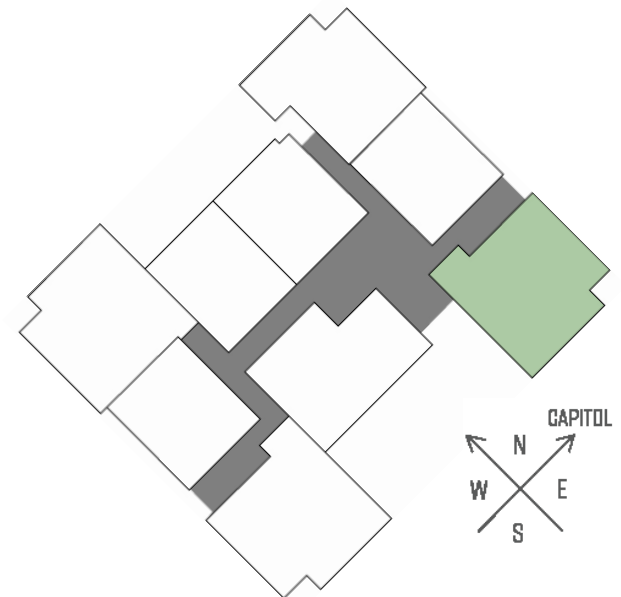
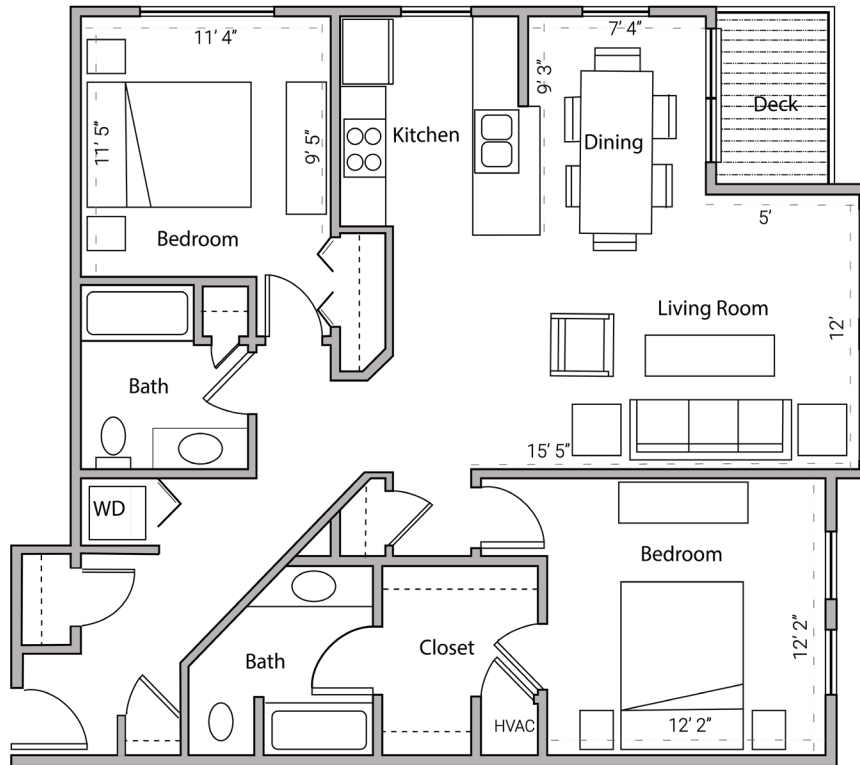
430 WEST MAIN STREET - MADISON, WI

TWO BEDROOM
TWO BATHROOM
1,143 SQUARE FEET

PRICING:

AVAILABILITY:

FEATURES:



PROFESSIONALLY MANAGED BY URBAN LAND INTEREST (608) 661-7600 WWW.ULI.COM